

Get involved

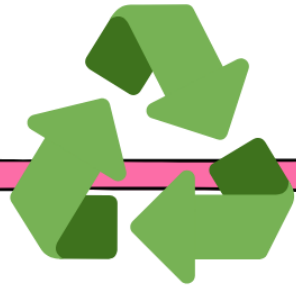
Waste Reduction

Groups & programs

[Adelaide Waste Collective](#)
[ASC Library of Things](#)
[KESAB environmental solutions](#)
[North Adelaide Waste Management Authority \(NAWMA\)](#)
[REDcycle](#)
[Refuse Reduce Reuse Recycle in Adelaide](#)
[Reshare](#)
[Rosella St](#)
[Share Waste](#)
[TerraCycle](#)
[Which Bin SA](#)

Places

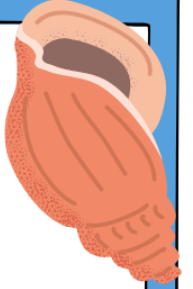
[KESAB Education Centre](#)
[Makerspace Adelaide](#)
[Repair cafes](#)
[The Adelaide Remakery](#)



Coastal Management

Groups & programs

[Adopt a Spot Scheme](#)
[Adelaide Dolphin Sanctuary Action Group](#)
[Aus Ocean](#)
[Australian Marine Wildlife Research and Rescue Organisation](#)
[Australian Microplastic Assessment Project \(AUSMAP\)](#)
[Coastal Ambassadors Program](#)
[Experiencing Marine Sanctuaries](#)
[Fishwatch SA](#)
[Malacological Society SA](#)
[Marine Life Society of South Australia](#)
[Reef Watch SA](#)
[Sea Shepherd](#)
[Western Adelaide Coastal Residents' Association \(WACRA\)](#)



Places

[Marine Discovery Centre](#)
[Marine Life Society of South Australia](#)
[St Kilda Mangrove Trail and Interpretive Centre](#)



If you've got a group, program or place to add, please get in touch!

LOCATED AT THE JOINERY, 111 FRANKLIN ST,
ADELAIDE | KAURNA COUNTRY
10AM-3PM | MONDAYS, TUESDAYS & FRIDAYS

www.adelaidesustainabilitycentre.org.au

@AdelaideSustainabilityCentre
 @adelaidesustainability

Get involved

Food & Gardening

Groups & programs

- [Eat Local South Australia](#)
- [Foodbank](#)
- [Grow Free](#)
- [Local Harvest](#)
- [Open Food Network Australia](#)
- [Oz Harvest](#)
- [Permaculture SA](#)
- [Rare Fruit Society of South Australia](#)
- [Ripe Near Me](#)
- [SA Urban Food Network](#)
- [The Compost Network](#)
- [The Food Embassy](#)



Places

- [Find a Community Garden near you](#)
- [Adelaide Central Market](#)
- [Community Garden in your council area](#)
- [Community Gardens Australia](#)
- [Joe's Connected Garden](#)
- [Little Sprouts Kitchen Garden](#)
- [The Foodprint Experience](#)
- [Village Greens of Willunga Creek](#)
- [Wagtail Urban Farm](#)



If you've got a group, program or place to add, please get in touch!

LOCATED AT THE JOINERY, 111 FRANKLIN ST,
ADELAIDE | KAURNA COUNTRY
10AM-3PM | MONDAYS, TUESDAYS & FRIDAYS

www.adelaidesustainabilitycentre.org.au

[f @AdelaideSustainabilityCentre](#)
[@adelaidesustainability](#)



Get involved

Community & Advocacy

Groups & programs

[350.org](#)
[Australian Association for Environmental Education \(AAEE\)](#)
[Australian Association of Environmental Education](#)
[Australian Student Environment Network](#)
[Australian Youth Climate Coalition](#)
[Bike Australia](#)
[Children's University](#)
[Conservation Council of South Australia](#)
[Estuary Care Foundation](#)
[Extinction Rebellion](#)
[Friends of the Earth](#)
[GetUp](#)
[Junior Field Naturalists](#)
[KidnKind](#)
[Living Smart courses](#)
[People for Public Transport](#)
[Port Adelaide Bicycle Users Group](#)
[Port of Adelaide Branch of Natural Trust](#)
[Roots and Shoots](#)
[School Strike for Climate](#)



[Scientific Expedition Group Inc.](#)
[Shift Australia](#)
[Sustainable Communities South Australia](#)
[Think Enough](#)
[Volunteering SA](#)
[Walking SA](#)
[Youth Opportunities Personal Leadership Program](#)
[Youth Parliament](#)

Places

[Adelaide Bike Kitchen](#)
[Adelaide City shed](#)
[Adelaide Community Bicycle Workshop](#)
[Adelaide Sustainability Centre](#)
[Aldinga Arts Eco Village](#)
[Christie Walk](#)
[Community centres in your council area](#)
[Elizabeth House Over 50's Community Centre](#)
[Living Kurna Cultural Centre](#)
[Port Environment Centre](#)
[The Joinery](#)



If you've got a group, program or place to add, please get in touch!

LOCATED AT THE JOINERY, 111 FRANKLIN ST,
ADELAIDE | KAURNA COUNTRY
10AM-3PM | MONDAYS, TUESDAYS & FRIDAYS

www.adelaidesustainabilitycentre.org.au

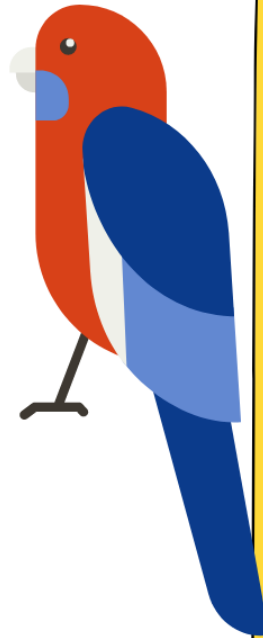
@AdelaideSustainabilityCentre
 @adelaidesustainability

Get involved

Biodiversity & Conservation

Groups & programs

[A Rocha](#)
[Bird Life Australia](#)
[Birds SA](#)
[Bringing Back the Butterflies](#)
[Bush for Life](#)
[Butterfly Conservation South Australia Inc.](#)
[Cobbler Creek Trail Maintenance](#)
[Conservation Volunteers](#)
[Estuary Care Foundation](#)
[Friends of Parks South Australia](#)
[Friends of Private Bushland](#)
[GroundSwell Community Group](#)
[Henley Dunes Care Group](#)
[Junior Landcare Group](#)
[Landcare Association of South Australia](#)
[National Parks and Wildlife Service South Australia](#)
[Native Orchid Society of South Australia \(NOSSA\)](#)
[Nature Foundation](#)



[Playford Greening and Landcare Group](#)
[Port Adelaide Residents Environmental Protection Group](#)
[River Murray Youth Council](#)
[Semaphore Largs Dune Group](#)
[The Field Naturalists Society of South Australia](#)
[Trees for Life](#)
[Weed Management Society of South Australia](#)
[Wilderness Society](#)
[Youth and Community in Conservation Action \(YACCA\)](#)
[Youth at the Zoo](#)

Places

[Barossa Bushgardens](#)
[Cleland Wildlife Park](#)
[Landscape South Australia](#)
[Oaklands Wetland and Education Centre](#)



If you've got a group, program or place to add, please get in touch!

LOCATED AT THE JOINERY, 111 FRANKLIN ST,
ADELAIDE | KAURNA COUNTRY
10AM-3PM | MONDAYS, TUESDAYS & FRIDAYS

www.adelaidesustainabilitycentre.org.au

[f @AdelaideSustainabilityCentre](#)
[@adelaidesustainability](#)